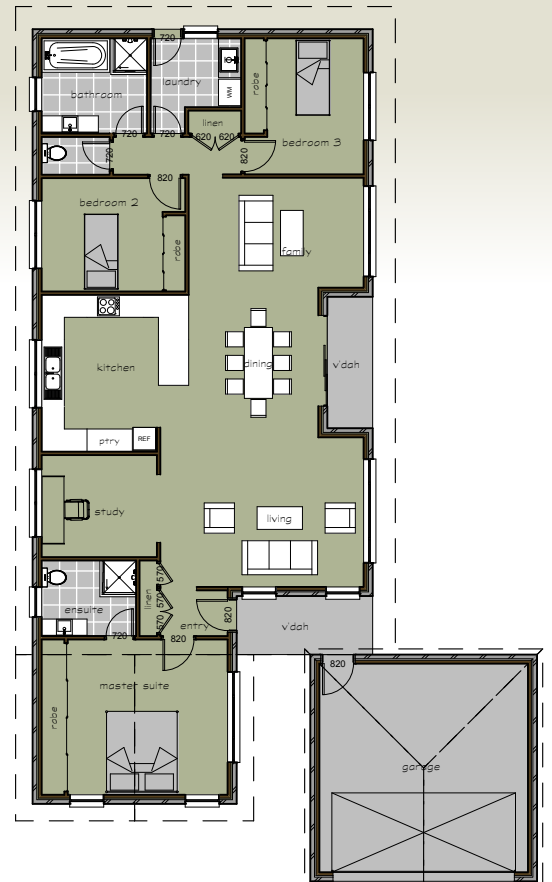


# TRADITIONAL 17.2



## STANDARD SPECIFICATION

|             |           |        |
|-------------|-----------|--------|
| LIVING AREA | 160.5sqm  | 17.2SQ |
| GARAGE AREA | 36.0sqm   | 3.8SQ  |
| V'DAHS      | 9.76sqm   | 1.05SQ |
| TOTAL AREA  | 206.26sqm | 22.2SQ |



## LOGICAL HOMES

PO BOX 79  
 WARRAGUL 3820  
 Ph 0416018799  
 Ph/Fax 56281331  
 email-brad@logicalhomes.net.au  
 logicalhomes.net.au